

TOWER®

over 100 YEARS of quality



T127000

HH77 7.4V Cordless Wet and Dry Handheld Vacuum



SAFETY AND INSTRUCTION MANUAL
PLEASE READ CAREFULLY

*Subject to registering your Extended Guarantee online at www.towerhousewares.co.uk.



Towerbrand

GREAT BRITISH DESIGN, INNOVATION
AND EXCELLENCE SINCE 1912

Since the turn of the 20th century, Tower has been designing, developing and manufacturing housewares and small appliances used by millions of households throughout the UK and beyond. During the 1960s, the rise in popularity of pressure cooking saw Tower become the UK's largest producer of pressure cookers, right through into the late 1980s. In recent years the Tower brand has been reborn with an exciting and varied range of housewares and electrical appliances that have quickly reinstated the brand's richly deserved status as a household name.

TOWER

Visit
www.towerhousewares.co.uk
for more fantastic products.

Thank you for purchasing this appliance from the Tower range.

Please read this manual carefully BEFORE using the appliance for your own safety.

It has been designed to provide many years of trouble-free use.

There are many benefits to using a Tower Handheld vacuum:

- 7.4V cordless rechargeable handheld vacuum.
- Powerful 50W motor giving 3-4KPA suction.
- Up to 20 minute runtime from a single charge.
- Wet and dry suction suitable for any mess or spill
- Easy-empty dust compartment.
- Portable handheld operation
- Includes crevice tool, wet rubber nozzle and round dusting brush.

Contents:

1. **Specifications**
Components and structure
2. **Technical Data**
3. **Important Safety Information**
4. **Before First Use**
5. **Using your Appliance**
6. **Troubleshooting**
7. **Recycling**
8. **Cleaning & Care**
9. **Wiring Safety**
10. **Warranty Information**
11. **Your Receipt**

See back page for Customer Service Information.

Call us first, we can help.

With advice, spares and returns.

Visit our website: towerhousewares.co.uk Call: +44 (0)333 220 6066
(8.30am to 6.00pm Monday-Friday)

1 - Specifications:

This box contains:

- Instruction Manual
- Handheld Wet and Dry Vacuum Cleaner
- DC Adaptor
- Wall Mounting Kit
- Filter
- Crevice Tool
- Wet Rubber Nozzle
- Round Dusting Brush



Structure of your appliance:

- | | |
|------------------------|----------------------------------|
| 1. Wet rubber nozzle | 6. Dust container |
| 2. Wall mounting kit | 7. Dust container release button |
| 3. Crevice tool | 8. On/Off switch |
| 4. DC adaptor | 9. Handle |
| 5. Round dusting brush | |

2 - Technical Data:

Description:	HH77 7.4V Cordless Wet and Dry Handheld Vacuum Cleaner
Model:	T127000
Voltage:	DC 7.4V
Product Power:	50W
Adaptor Rating	
Input:	100-240V ~50/60Hz 0.5A
Output:	10V DC 500mAh
Charging Time:	4 hours

Documentation

We declare that this product conforms to the following product legislation in accordance with the following directive(s):

2014/30/EU	Electromagnetic Compatibility Directive.
2014/35/EU	Low Voltage Directive.
2011/65/EU	Restriction of Hazardous Substances Directive.

RK Wholesale LTD Quality Assurance, United Kingdom.

Should you encounter problems or require a replacement part, contact the Tower Customer Support Team: **+44 (0) 333 220 6066**.

Some spare parts may be ordered from the Tower website.
Your warranty becomes void should you decide to use non Tower spare parts.
Spare parts can be purchased from **www.towerhousewares.co.uk**

Guarantee for spare parts:

The spares and accessories are guaranteed for 1 year from date of purchase.
The main body and housing are guaranteed for the extended free warranty subject to registration.
If any defect arises due to faulty materials of workmanship, the faulty products must be returned to the place of purchase within 12 months from the date of purchase.
Refund or replacement is at the discretion of the retailer.

3 - Important Safety Information:

Please read these notes carefully BEFORE using your Tower appliance.

- Check that the voltage of the main circuit corresponds with the rating of the appliance before operating.
- If the supply cord or appliance is damaged, stop using the appliance immediately and seek advice from the manufacturer, its service agent or a similarly qualified person.
- DO NOT let the cord hang over the edge of a table or counter or let it come into contact with any hot surfaces.
- DO NOT carry the appliance by the power cord.
- DO NOT use any extension cord with this appliance.
- DO NOT pull the plug out by the cord as this may damage the plug and/or the cable.
- Switch off at the wall socket then remove the plug from the socket when not in use or before cleaning.
- Switch off and unplug before fitting or removing tools/ attachments, after use and before cleaning.
- Close supervision is necessary when any appliance is used by or near children.
- Children should not play with the appliance.
- This appliance can be used by children aged from 8 years and above and persons with reduced physical, sensory or mental capabilities or lack of experience and knowledge if they have been given supervision or instruction concerning use of the appliance in a safe way and understand the hazards involved.
- Cleaning and user maintenance should not be undertaken by children without supervision.
- Take care when any appliance is used near pets.

- Not suitable for carpets with long fibres as the bristles will damage the fibres.
- Keep the vacuum cleaner moving over the carpet surface at all times to avoid damaging the carpet fibres.
- DO NOT use this product for anything other than its intended use.
- DO NOT immerse cords, plugs or any part of the appliance in water or any other liquid.
- This appliance is for household use only.
- DO NOT use the appliance outdoors.
- Keep hair, loose clothing, fingers and all body parts away from moving parts.
- DO NOT use to pick up flammable liquids such as gasoline or use in an area where they might be present.
- DO NOT use the appliance without the dust container filter in place.
- DO NOT pick up anything that is burning or smoking such as cigarettes, matches or hot ashes.
- Use extra care when cleaning on stairs.
- Use only manufacturer's recommended accessories.
- DO NOT pull cord, use cord as a handle, close a door on cord, or pull cord around sharp edges or corners.
- DO NOT run vacuum cleaner over the cord. Keep cord away from heated surfaces.

ADDITIONAL BATTERY SAFETY PRECAUTIONS

- DO NOT use a battery pack or appliance that is damaged or modified. Damaged or modified batteries may exhibit unpredictable behaviour resulting in fire, explosion or risk of injury. DO NOT expose battery pack or appliance to fire or excessive temperatures. Exposure to fire or temperatures above 60°C (140°F) may cause explosion.

- The battery is a sealed unit and under normal circumstances poses no safety concerns. In the unlikely event that liquid leaks from the battery, DO NOT touch the liquid as it may cause irritation or burns to skin, eyes or nose. Should battery liquid come in contact with skin, immediately wash the affected area with soap and water. In case of eye contact, immediately flush your eyes thoroughly with water for at least 15 minutes and seek medical attention.
- In case of inhalation, immediately expose to fresh air and seek out medical advice.
- Disposal – wear gloves to handle the battery. Dispose of it immediately, following local ordinances or regulations.
- Follow all charging instructions and DO NOT charge the battery pack or the appliance outside of the temperature range specified in the instructions. Charging improperly or at a temperature outside of the specified range may damage the battery and increase the risk of fire. To ensure maximum battery life, observe the following guidelines:
 - When not in use the appliance should be stored at room temperature. Recommended range: 18°C (64°F) to 28°C (82°F).
 - The ambient temperature range for operation and charging should be 10°C (50°F) to 30°C (86°F).
 - FIRE WARNING – DO NOT place this product on or near a cooker or any other hot surface and DO NOT incinerate this appliance even if it is severely damaged. The battery might catch fire or explode.
 - FIRE WARNING – DO NOT apply any fragrance or scented product to the filter(s) of this appliance. The chemicals in such products are known to be flammable and can cause the appliance to catch fire.
 - In the unlikely event the appliance develops a fault, stop using it immediately and seek advice from the Customer Support Team: **+44 (0) 333 220 6066**

4 - Before First Use

1. Remove the product from the box.
2. Remove any packaging from the product.
3. Please retain all packaging until you have checked and counted all the parts and the contents against the parts list.
4. Dispose of the packaging in a responsible manner.

Installing the Wall Mounting Kit:

- This unit is complete with a wall mounting kit, for easy charging and storage.
- To affix the wall mounting kit to a wall, first place it flat against the desired area and mark out its dimensions in pencil.
- Once the dimensions are marked out, drill 2 holes into the wall, ensuring they roughly match up to the screw holes at the back of the mount.
- When the 2 holes have been made, insert a screw and wall plug into each of them. Ensure the screws are firmly secured before attempting to hang the mount from them.
- When the 2 screws are slotted in and firmly secured, place the wall mount against the wall so that the 2 screw holes at the back align with the 2 screws on the wall. Once the 2 parts are aligned, let the mount slide down slightly until it sits flush atop the 2 screws.
- The wall mount is now ready for normal use.

5 - Using Your Appliance

Charging the Appliance:

1. This unit can be charged using the included mains adaptor and charging base.
2. To charge the vacuum, slot the mains adaptor through the hole at the bottom of the base, so that the charging pin sits in an upright position. The charger is correctly positioned when the flat edges surrounding it are parallel with the edges of the hole at the bottom of the base.
3. Once the adaptor is correctly slotted into the base, sit the unit on the charging base with its underside facing the wall, so that the charging jack at the back of the unit is aligned with the charging pin at the bottom of the base. If the vacuum cleaner is correctly positioned, the pin should automatically slot into the charging jack.
4. The LED indicator on the body of the charger will light up red to show the unit is charging, and go out when the unit is fully charged' to read 'The LED indicator on the body of the charger will light up red to show the unit is charging, and turn to green when the unit is fully charged
5. If the unit does not charge, make sure the vacuum is correctly positioned within the charging base and that the charging pin is slotted into the charging jack.
6. Alternatively, you can charge the vacuum cleaner directly from the mains. To do this, plug the mains adaptor directly into the corresponding jack at the back of the unit, and plug the other end of the adaptor into an active mains socket.

Note: The average charging time for this unit is 3-4 hours.

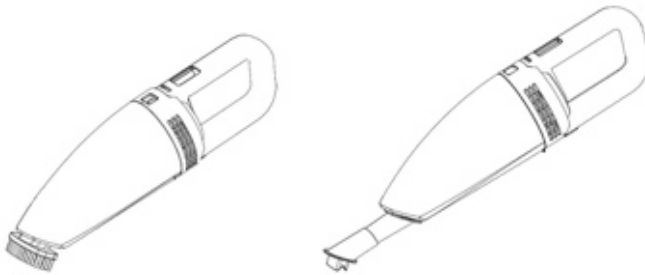
Turning the Appliance On and Off:

1. Push the On/Off switch on the body of the unit forward to the ON position to turn the unit on. The LED power indicator will turn on and air will begin suctioning from the unit to indicate it has been powered up.
2. Pull the On/Off switch backwards to the OFF position when the unit is in operation to turn it off. The LED power indicator will turn off and air will stop suctioning from the unit to indicate it has been powered down.

Using the Accessories:

1. This unit comes complete with a full range of accessories, including:
 - Crevice tool, to vacuum hard-to-reach areas.
 - Round brush attachment, for cleaning upholstery or delicate fabrics.
 - Wet rubber nozzle, for sucking up spillages.
2. To use any of the included accessories, attach them to the suction end of the vacuum, ensuring they sit flush within the opening.
3. To remove an attached accessory, pull it firmly away from the main body of the unit until it detaches.
4. Refer to the illustrations below for guidance on how to attach the accessories to the vacuum.

Note: To use the wet rubber nozzle, first attach it to the end of the crevice tool, ensuring the two parts are firmly secured together. Once the wet rubber nozzle is correctly affixed, attach the crevice tool to the vacuum cleaner, as shown below.



6 - Troubleshooting

Problem	Solution
The vacuum will not work	<ul style="list-style-type: none">· Ensure the vacuum cleaner is fully charged. To charge the unit, plug the DC adaptor into it, connect it to a mains socket and wait until the LED indicator on the charger turns to green.· Check that there are no blockages to the dust tank or filter and remove as necessary.
The vacuum will not pick-up or the suction power is weak	<ul style="list-style-type: none">· The dust container may be full, or the filters may require cleaning. Empty the dust container and clean the filters.· There may be blockages in the filters or dust tank. Check for blockages and clean the filters and dust tank as detailed in the 'Cleaning and Care' section.
Dust is escaping from the vacuum	<ul style="list-style-type: none">· The filter may not be installed correctly, or the dust container may be full. Empty the dust container and reassemble the filter system.
The vacuum is making an unusual sound or hissing.	<ul style="list-style-type: none">· The airflow may be restricted or blocked. Check for blockages and clean the filters and hose as detailed in the 'Cleaning and Care' section.

7 - Recycling

DISPOSAL OF THE UNIT

Appliances bearing the symbol shown here may not be disposed of in domestic rubbish. You are required to dispose of old electrical and electronic appliances like this separately.

Please visit www.recycle-more.co.uk or www.recyclenow.co.uk for access to information about the recycling of electrical items.

Please visit www.weeeiireland.ie for access to information about the recycling of electrical items purchased in Ireland.

The WEEE directive, introduced in August 2006, states that all electrical items must be recycled, rather than taken to landfill.

Please arrange to take this appliance to your local Civic Amenity site for recycling, once it has reached the end of its life.



8 - Cleaning & Care

Emptying the Dust Tank:

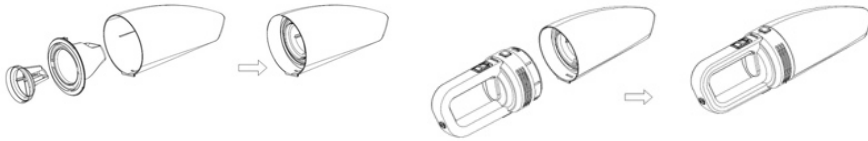
Note: : Ensure the vacuum cleaner is turned off and unplugged from the mains before emptying the dust tank.

1. To remove the dust tank from the vacuum cleaner, press the release button on the main body of the unit, then pull the tank firmly towards you and away from the main body of the vacuum.
2. Once the dust tank has been removed, pull out the filter from inside and tap it over a rubbish bin or similar surface to remove any dust residue. Once the filter is clean, rinse it under running water and leave it to dry.
3. If necessary, tap the dust tank over a rubbish bin or similar surface to remove any dust residue left inside it.

Note: Ensure the unit is thoroughly clean and the filter is completely dry before attempting to use or store it.

4. Ensure the filter is inserted back into the unit before attempting to use it again. If the filter is not installed, the dust tank may not properly attach to the unit. Refer to the illustrations below for guidance on how to reattach the filter and dust tank.

Note: Use the small notch on the filter casing and half-moon shape inside the filter itself as guides when replacing the filter into the dust tank. The filter is correctly positioned when the small notch on the casing is aligned with the corresponding tab on the main body of the dust tank, the half-moon shape on the filter is facing upwards, and the grooved area on the dust cup itself is facing downwards.



Clearing Blockages:

If the dust tank is overfilled, the filter is clogged up, or the vacuum picks up a larger piece of debris, the vacuum may become clogged.

Should this occur, carry out the following steps to unplug the vacuum:

1. Check the dust tank and empty it if necessary.
2. Check the filter for any debris and rinse it under running water if necessary, as detailed in the sections above.
3. Detach any attachments from the unit and check for blockages.

Storing the Appliance:

Note: Before storing the vacuum, unplug it from the mains and remove any attachments from the front of the unit.

Note: To prolong battery life and ensure safe storage, take care to observe the battery safety precautions outlined in the corresponding section of this manual before storing the unit.

- Store the appliance in a cool, dry place, preferably inside its original packaging, and out of the reach of children.

WARNING:

Do not immerse any electrical part of the appliance in water such as motor units or plugs. Please see cleaning section for further instructions.

9 - Wiring Safety for UK Use Only

(Power adapters only)

Never open the power adapter, you risk getting an electric shock.

Only use the power adapter that is supplied with your product.

You must always connect the power adapter to the product before connecting to the mains power supply.

The power adapter must be used indoors only, and must not be subjected to damp conditions.

The power adapter does not have any user serviceable parts.

If in doubt, consult a qualified electrician who will be pleased to do this for you.

If you need to remove the plug – disconnect it from the mains – and then cut it off of the mains lead and immediately dispose of it in a safe manner. Never attempt to reuse the plug or insert it into a socket outlet as there is a danger of an electric shock.

WARNING:

Do not attempt to open any part of the power adaptor or plug.

10 - Warranty



As a thank you for purchasing one of our fantastic products, we are offering you an extra 2 years peace of mind in addition to your 1 year guarantee.

To receive your extra 2 year guarantee, register your appliance online within 28 days of purchase by visiting www.towerhousewares.co.uk



This product is guaranteed for 12 months from the date of original purchase. If any defect arises due to faulty materials of workmanship, the faulty products must be returned to the place of purchase. Refund or replacement is at the discretion of the retailer.

The Following Conditions Apply:

- The product must be returned to the retailer with proof of purchase or a receipt.
- The product must be installed and used in accordance with the instructions contained in this instruction guide.
- It must be used only for domestic purposes.
- It does not cover wear and tear, cosmetic damage, misuse or consumable parts.
- Tower has limited liability for incidental or consequential loss or damage.

This guarantee is valid in the UK and Eire only.

The standard one year guarantee is only extended to the maximum available for each particular product upon registration of the product within 28 days of purchase. If you do not register the product with us within the 28 day period, your product is guaranteed for 1 year only.

To validate your extended warranty, please visit www.towerhousewares.co.uk and register with us online.

Please note that length of extended warranty offered is dependent on product type and that each qualifying product needs to be registered individually in order to extend its warranty past the standard 1 year.

Extended warranty is only valid with proof of purchase or receipt.

11 - Your Receipt

Affix your store receipt to this page for safe keeping.

TOWER®

over 100 YEARS of quality

thank you!

We hope you enjoy your appliance for many years. As a thank you for purchasing one of our fantastic products, we are offering you an extra 2 years peace of mind.

*To receive your extra 2 years guarantee, register your appliance online within 28 days of purchase by visiting:

www.towerhousewares.co.uk

Should you have a problem with your appliance, or need any spare parts, please call our Customer Support Team:

+44 (0) 333 220 6066

Your warranty becomes void should you decide to use non Tower spare parts. Spare parts can be purchased from **www.towerhousewares.co.uk**

